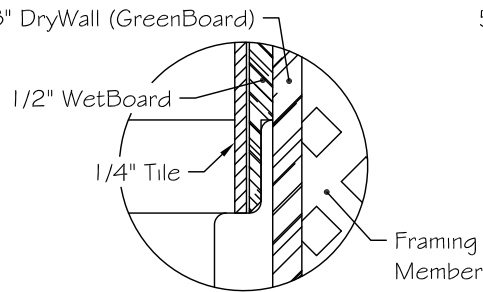
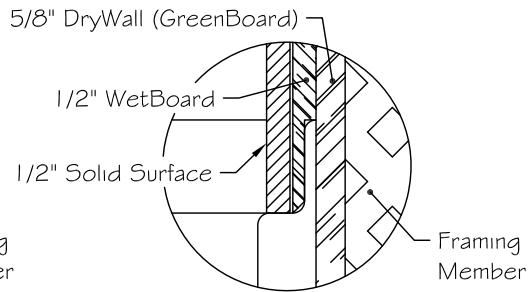


Detail "A"



Finish Out Of Detail "A"  
(For Tile Applications)



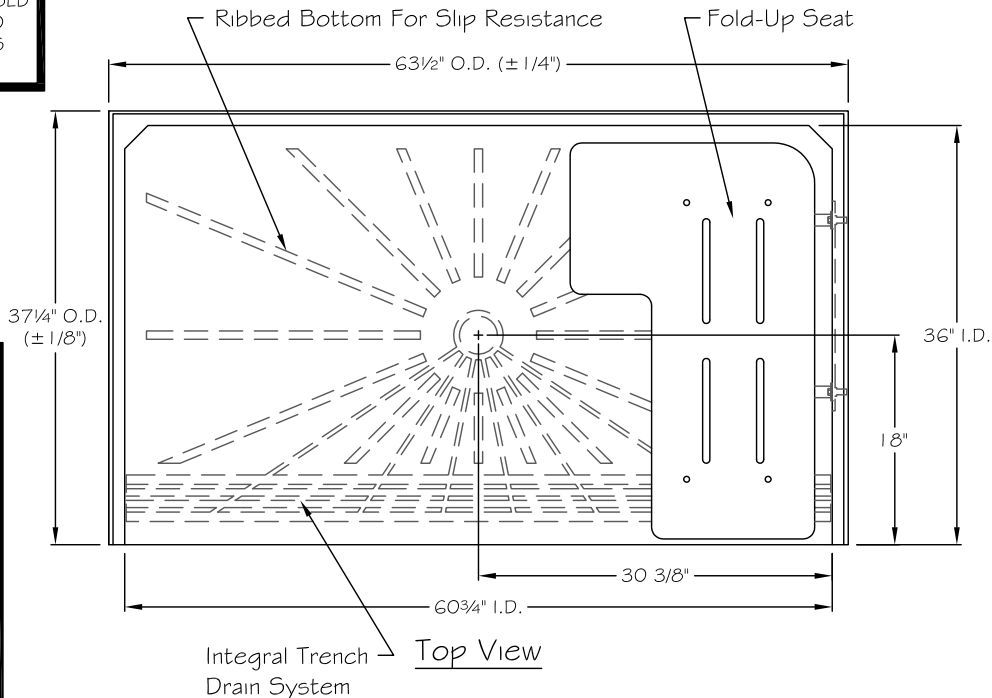
Finish Out Of Detail "A"  
(For Solid Surface Applications)

THIS DRAWING IS FOR SUBMITTAL PURPOSES ONLY. THIS DRAWINGS SHOULD NOT BE USED FOR INSTALLATION OF THIS UNIT. REFER TO AQUA BATH'S INSTALLATION INSTRUCTIONS FOR FRAMING AND ROUGH-IN DIMENSIONS.

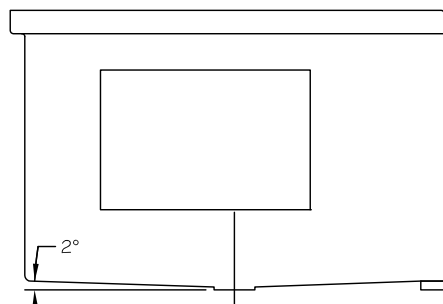
**Note:** Allow For Tolerances Of Unit.

Manufacturing Tolerances Listed On O.D. Dimensions Of Unit. Field Conditions Should Be Set

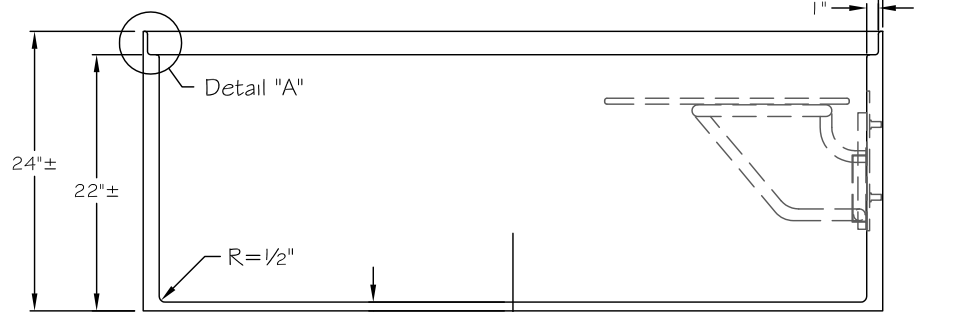
IT IS THE SOLE RESPONSIBILITY OF THE END USER TO CHECK WITH YOUR LOCAL CITY AND STATE FOR CODE COMPLIANCY. AQUA BATH'S ADVERTISED ADA COMPLIANT UNITS ARE BASED ON OUR INTERPRETATION OF THE AMERICANS WITH DISABILITIES ACT 2010 GUIDELINES. FEILD ALTERATIONS OR IMPROPER INSTALLATION COULD TAKE THE UNITS OUT OF COMPLIANCE. AQUA BATH ACCEPTS NO RESPONSIBLITY FOR FINAL CODE COMPLIANCE.



Note: Right Hand Unit Shown



Right Side View



Front View

				<b>AQUA BATH CO.</b>	
				305 PLUS PARK BLVD NASHVILLE, TN 37217	
REV.	DR.	DATE	DESCRIPTION	TITLE:	DRN BY: CDB
				Roll-In Shower Base	DATE: 09/30/19
				MODEL NO.: B6036BF FUS 3/4"	
				DRWG NO.:	SCALE: 3/4" = 1'-0"